

Toll Violation Enforcement Reciprocity



Linda S. Grant, Senior Section Manager
Maine Secretary of State
Bureau of Motor Vehicles

March 12-13, 2013

Agency Structures

- **Maine Secretary of State (SOS) - Constitutional office with oversight of the Bureau of Motor Vehicles, Maine State Archives and the Bureau of Corporations, Elections and Commissions**
- **Maine Toll Authority (MTA) – Quasi state government agency with legislative oversight**

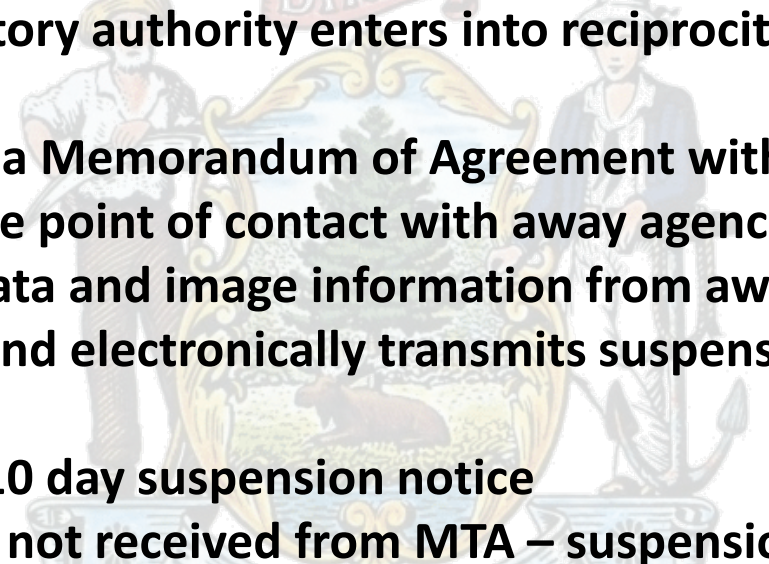
Program Evolution

- **Maine registration suspension with court order – 1995**
- **Registration suspension by BMV based on MTA notification – 2004 – with implementation in 2006**
- **Expand registration suspension process to include away agencies (New Hampshire & Massachusetts) - 2011**

HOW IT CAN WORK

- Legislative Support
 - Work with all partners and rules
 - Start small with a pilot phase
 - Single point of contact
 - Same collection/penalty philosophy
-

HOW IT DOES WORK

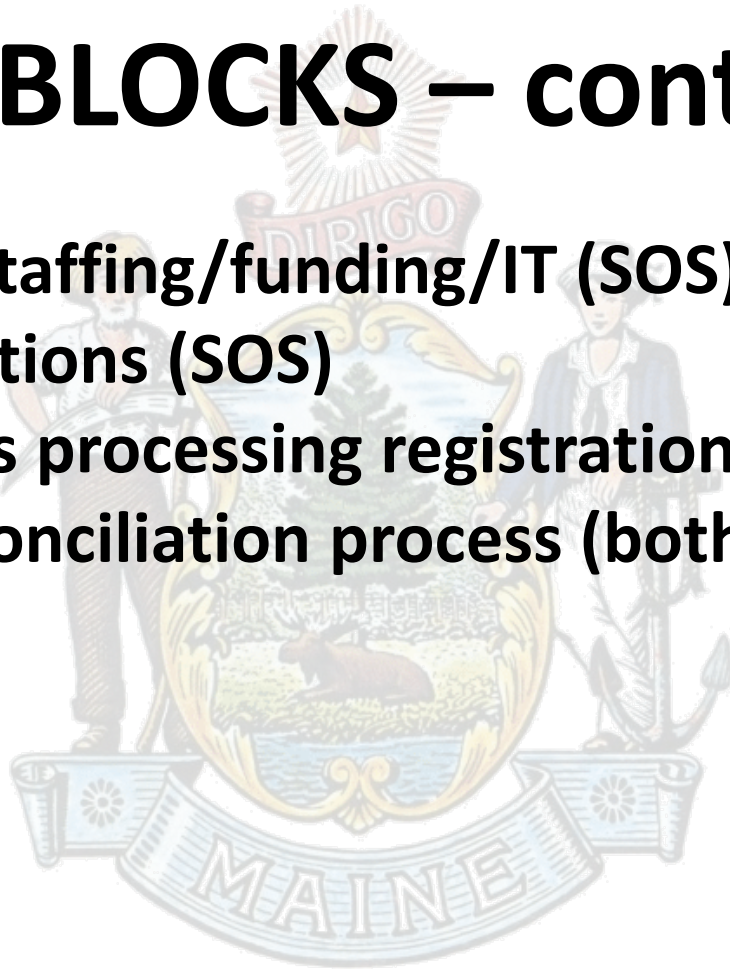
- MTA with statutory authority enters into reciprocity agreement with away agencies
 - SOS enters into a Memorandum of Agreement with MTA
 - MTA is the single point of contact with away agencies
 - MTA receives data and image information from away agencies
 - MTA compiles and electronically transmits suspension and compliance information
 - SOS generates 10 day suspension notice
 - If compliance is not received from MTA – suspension action taken
- 

ROADBLOCKS

- **Local rules (for MTA)**
 - **A reciprocal state requiring a certain number of violations before submission**
- **Limits on amounts of fee collected (for MTA)**
- **Suspension vs. withholding of privileges (for MTA)**
 - **To date – 60% of MA and 75% of NH suspension requests have been resolved vs. 42% of Maine’s request to MA and 25% to NH (they are hold states) so less urgency to comply**

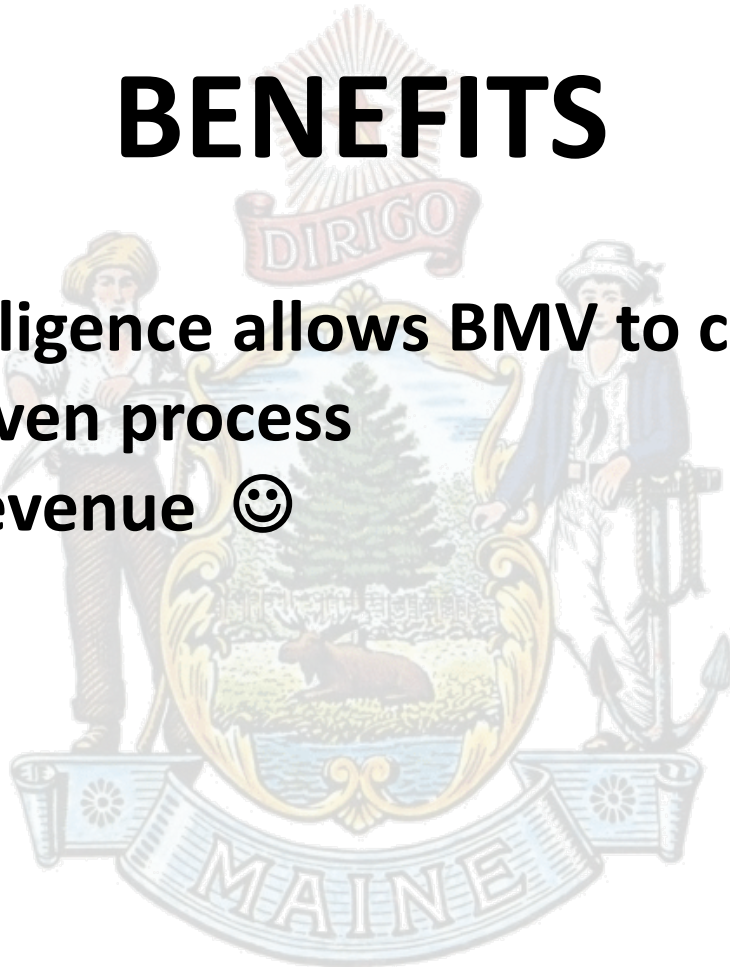
ROADBLOCKS – continued

- Resources – staffing/funding/IT (SOS)
- System limitations (SOS)
- Municipalities processing registrations (SOS)
- Real time reconciliation process (both)



BENEFITS

- MTA's due diligence allows BMV to complete statutory driven process
- Additional revenue 😊



THANK YOU

QUESTIONS?

