

# DIVS

## *PROGRAM STATUS*

October 2014



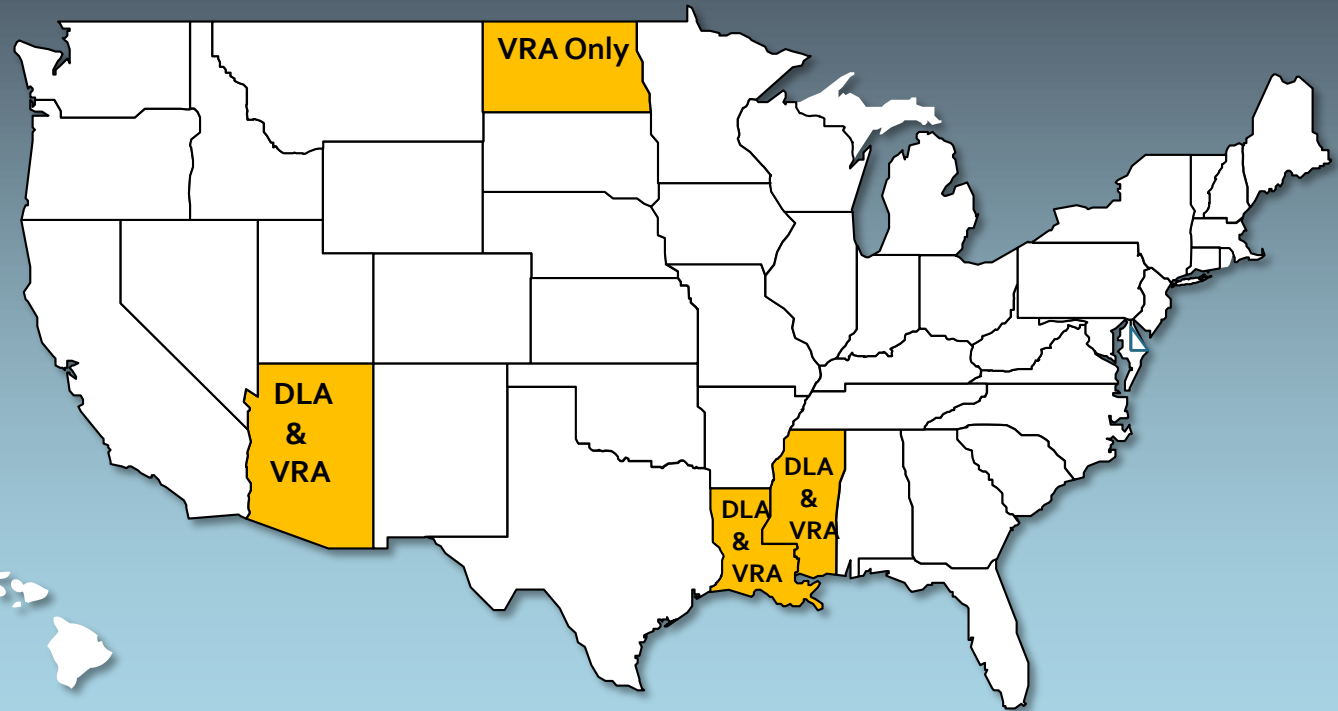
This Document was prepared under a grant from the Federal Emergency Management Agency's (FEMA) Grant Programs Directorate (GPD) United States Department of Homeland Security. Points of view or opinions expressed in this document are those of the authors and do not necessarily represent the official position or policies of FEMA/GPD or the U.S. Department of Homeland Security.

This document and associated work product were produced by Clerus Solutions, LLC as Program Manager to the DL/ID Verification Systems, Inc. program under contract to the Mississippi Department of Public Safety.




# Birth & DL/ID Verification Project

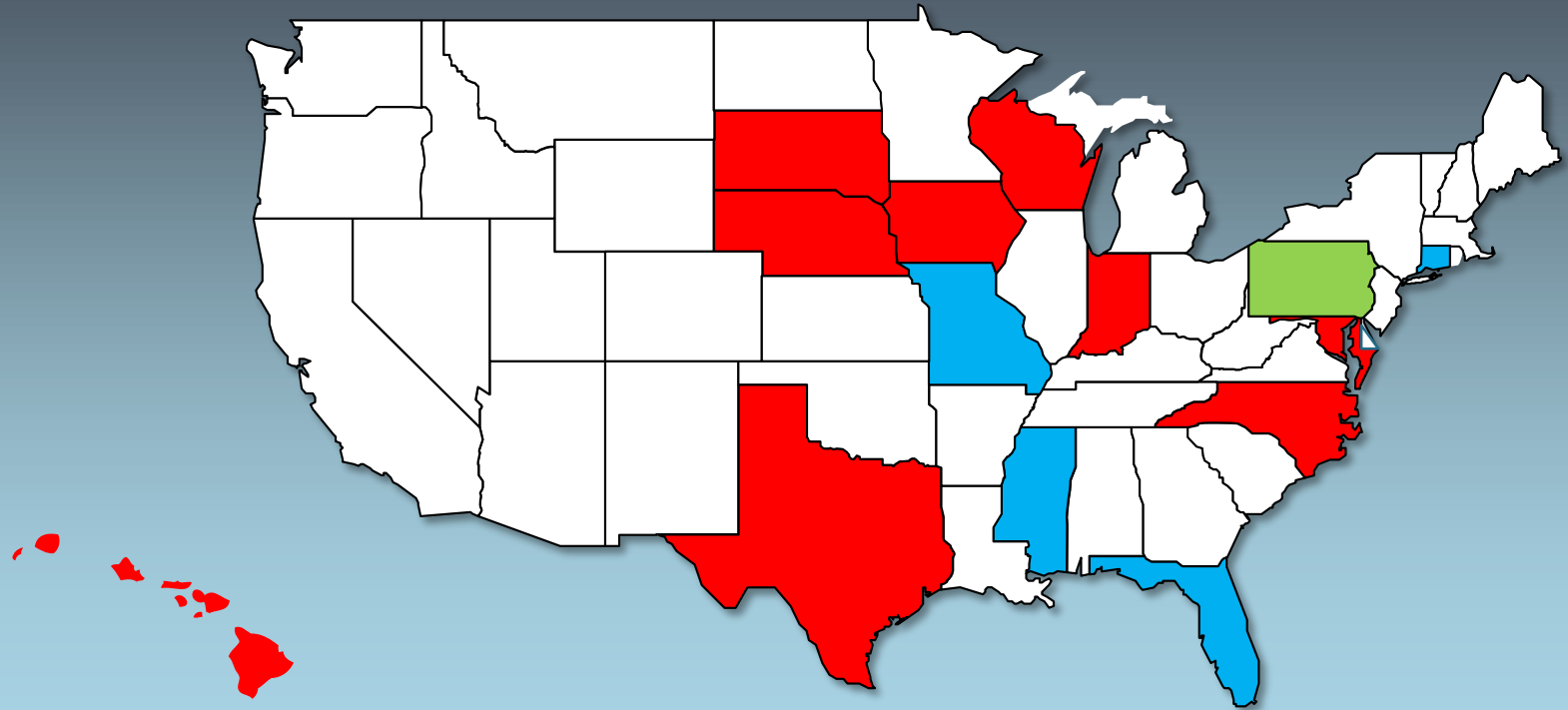
## Reciprocal Pilot Participants:

Mississippi  
Arizona  
Louisiana  
North Dakota  
DIVS  
AAMVA  
NAPHSIS



# VLS & USPVS Participants

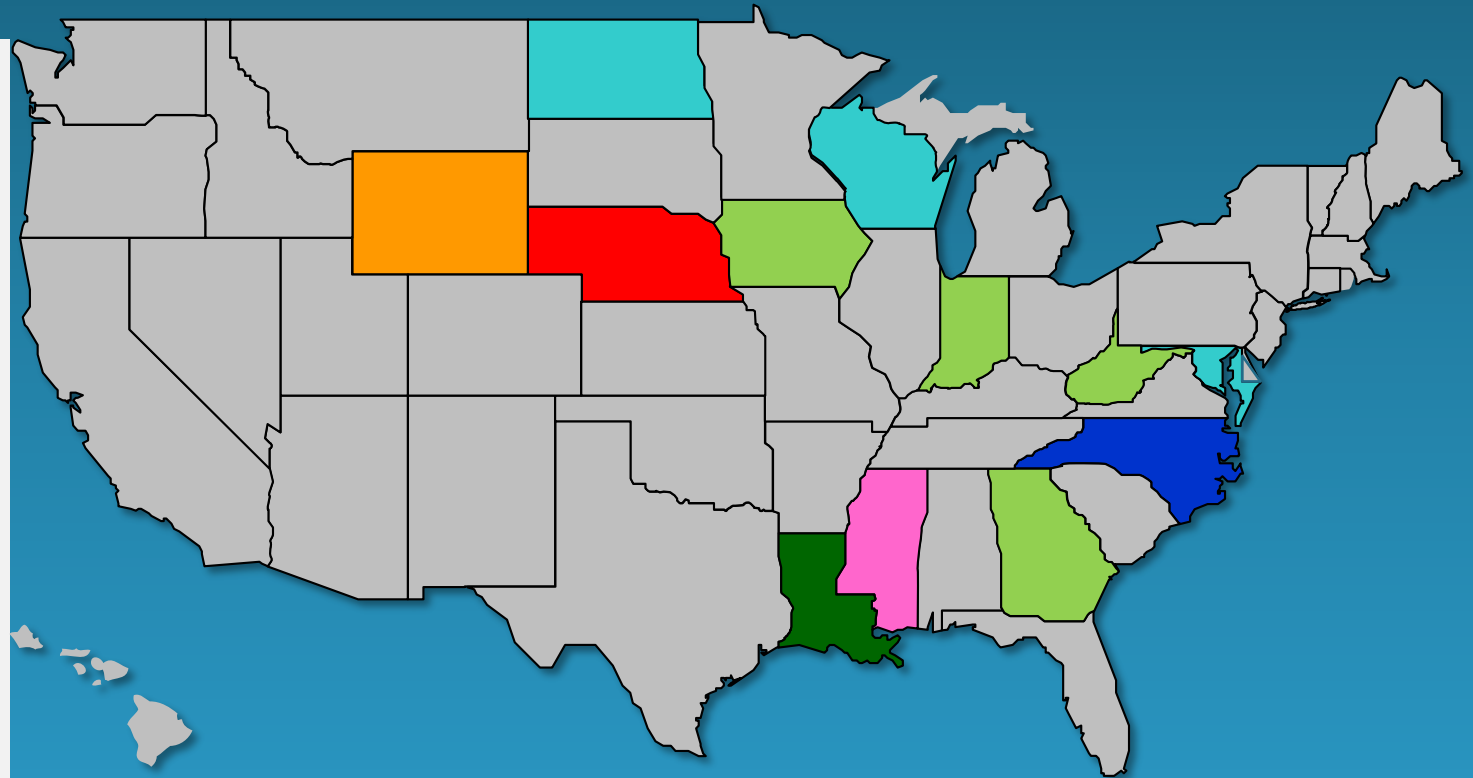
-  VLS Users
-  PVS Users
-  VLS & PVS



# S2S Pilot

## Implementation:

- July 2015 – 3 States
- October 2015 – 1 State
- December 2015 – 1 State
- January 2016 – 4 States
- June 2016 – 1 State
- September 2016 – 1 State
- Signed LOI – 1 State



# S2S Pilot States

## Implementation:

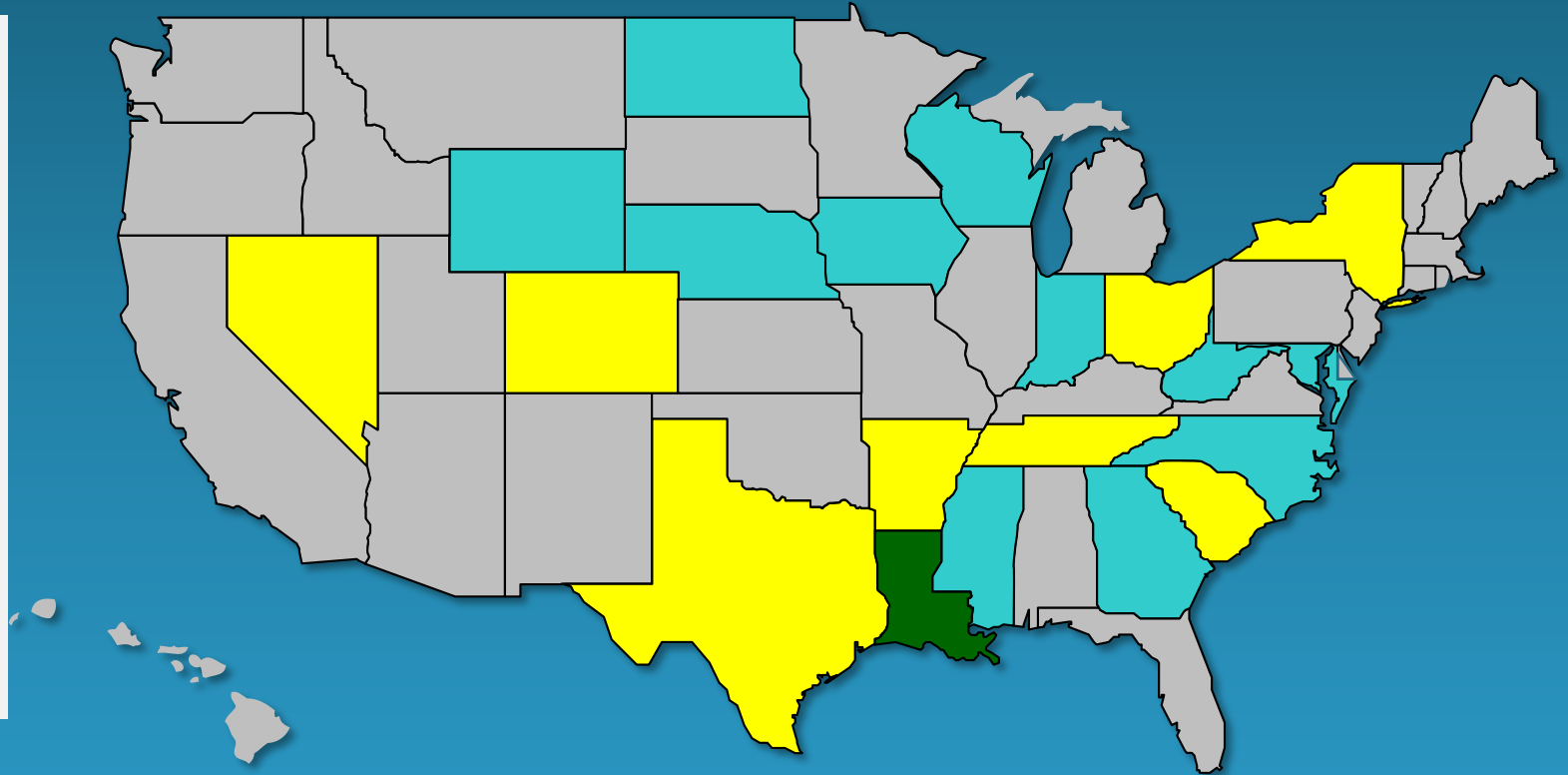
- Committed: 11 States
- Signed LOI – 1 State
- In Discussions – 8 States

**16 : States Funded**

**12 : States Committed**

**4 : Pilot Slots Available**

**8 : States Interested**



S2S



# Rules of the Road

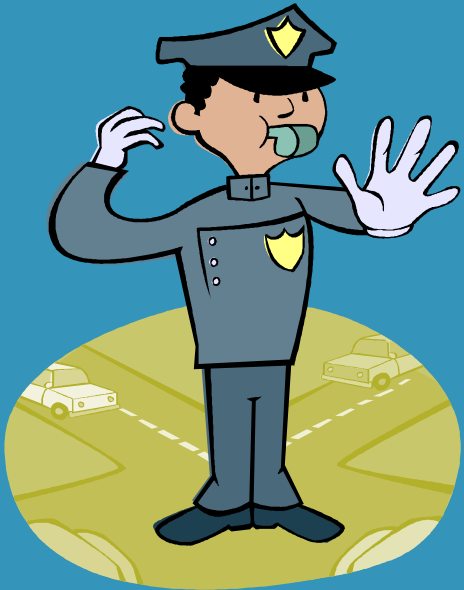
# S2S



## Rules of the Road

1. If the issuance of a card would result in the **person having two REAL ID cards**, then the issuing State would need to initiate a **Change State of Record**.
2. If the issuance of a card would result in the **person having two DL's**, then the issuing State would need to initiate a **Change State of Record**.

# S2S

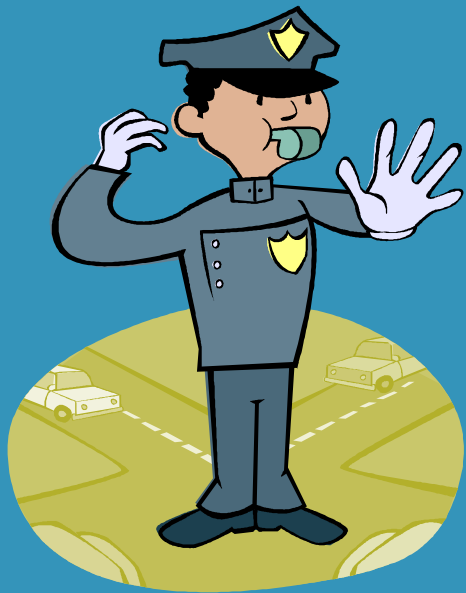


## Rules of the Road

3. If the issuance would not result in person having two REAL ID cards or two DL'S, but the State **did not permit the person to continue to hold a card from another State or the applicant surrendered the DL**, then the issuing State would need to initiate a **Change State of Record**.



# S2S



## Rules of the Road

4. If the issuance would not result in person having two REAL ID cards or two DL'S, the **State permitted and the person opted to hold a card from another State**, then the issuing State would need to initiate an **Add Pointer and send a Notice of Issuance** to the prior State.

# Pointer Data



## CDLIS vs. S2S

Field	CDLIS	S2S
Name	◆	◆
DOB	◆	◆
Partial SSN	◆	◆
DL/ID indicator		◆
Real ID indicator		◆
CDLIS Record indicator		◆

# Pointer Data

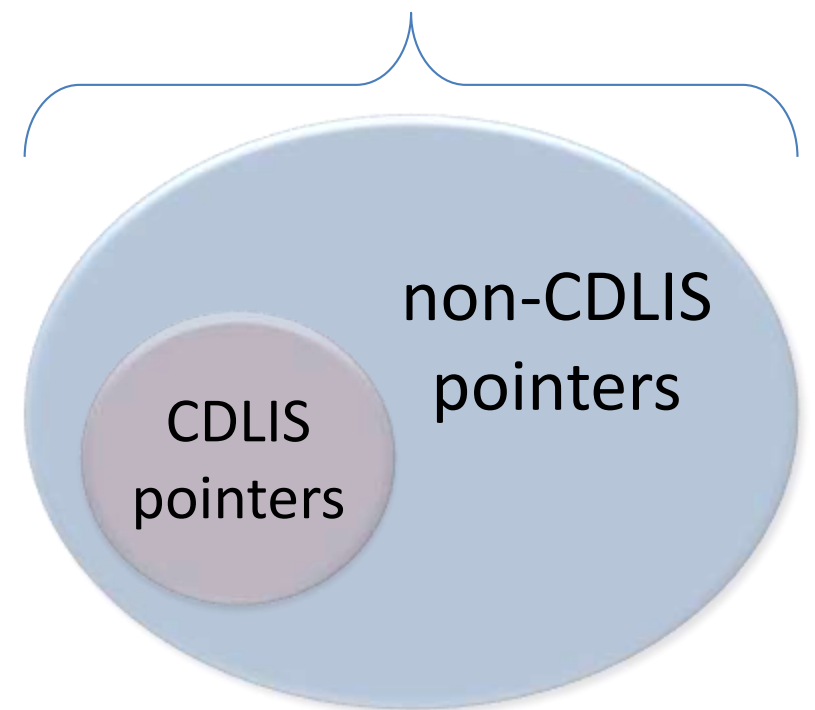


# State Participation

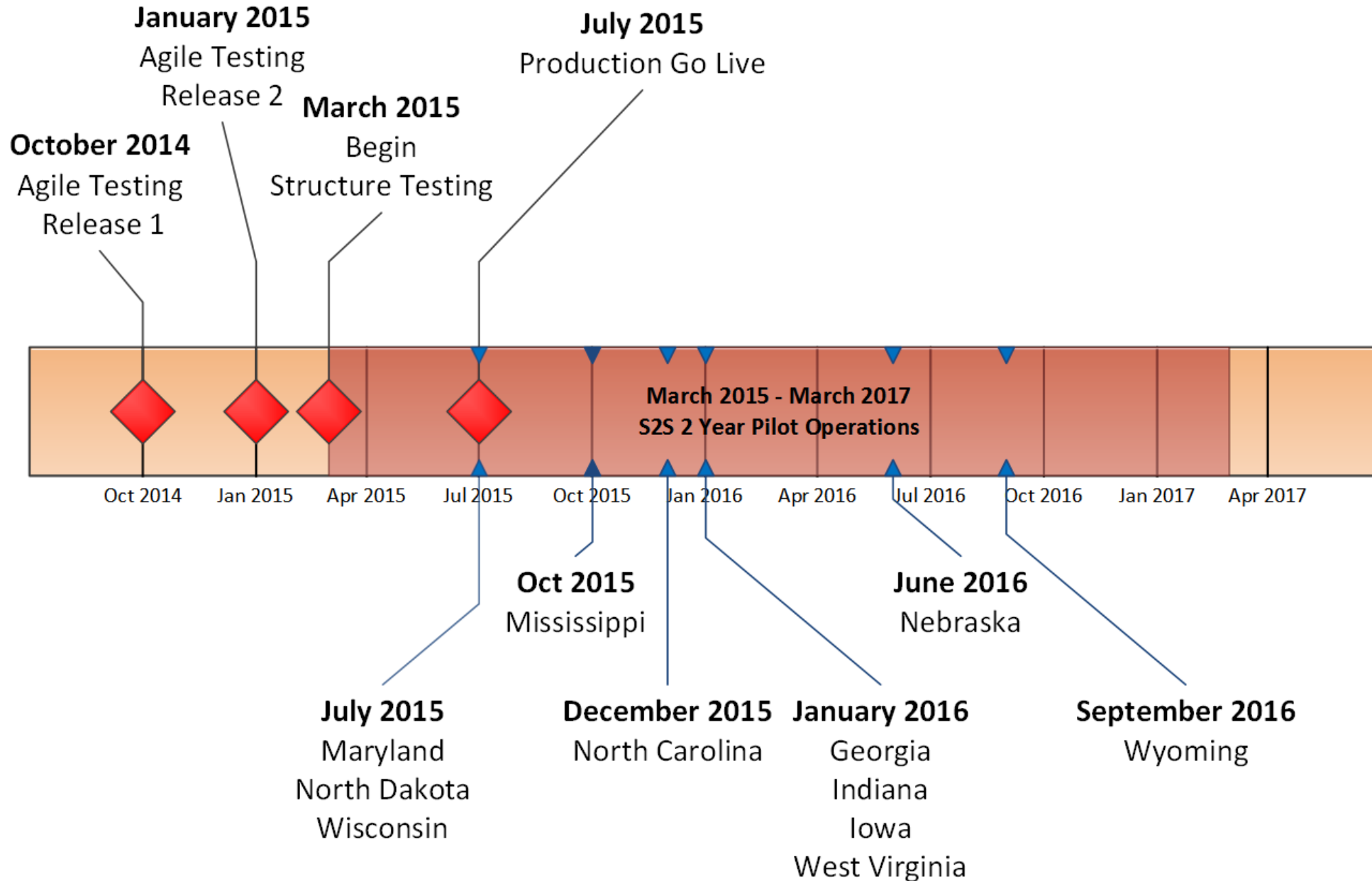
## CDLIS Only



## S2S



# S2S Development Schedule



# Questions?

[cnizer@mdot.state.md.us](mailto:cnizer@mdot.state.md.us)

[jmaxwell@clerussolutions.com](mailto:jmaxwell@clerussolutions.com)



This Document was prepared under a grant from the Federal Emergency Management Agency's (FEMA) Grant Programs Directorate (GPD) United States Department of Homeland Security. Points of view or opinions expressed in this document are those of the authors and do not necessarily represent the official position or policies of FEMA/GPD or the U.S. Department of Homeland Security.

This document and associated work product were produced by Clerus Solutions, LLC as Program Manager to the DL/ID Verification Systems, Inc. program under contract to the Mississippi Department of Public Safety.